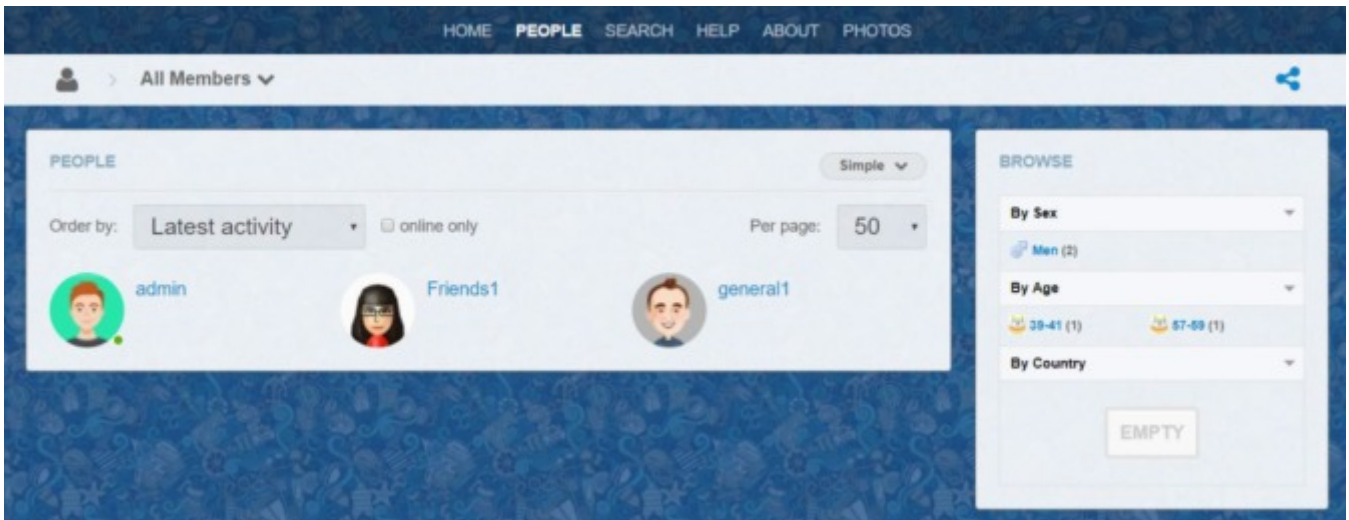


Modifying the People (Browse) Page

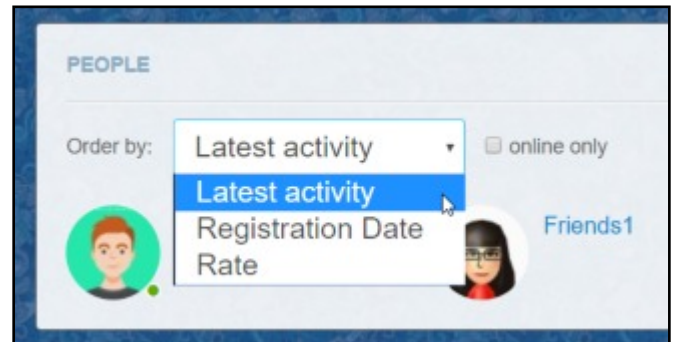


The People page offers four ways of finding members, but none are fantastic.

The **Order by** drop-down offers a few options, but there's no facility to sort members in alphabetical order. (See my tutorial **Sort Members Alphabetically** to change this).

The page is more suited to a dating site where popularity and age are important.

Latest Activity is handy because it allows you to see members who have visited the site recently, but **Registration dDte** or **Rate** (Ratings) are probably not important to most people.

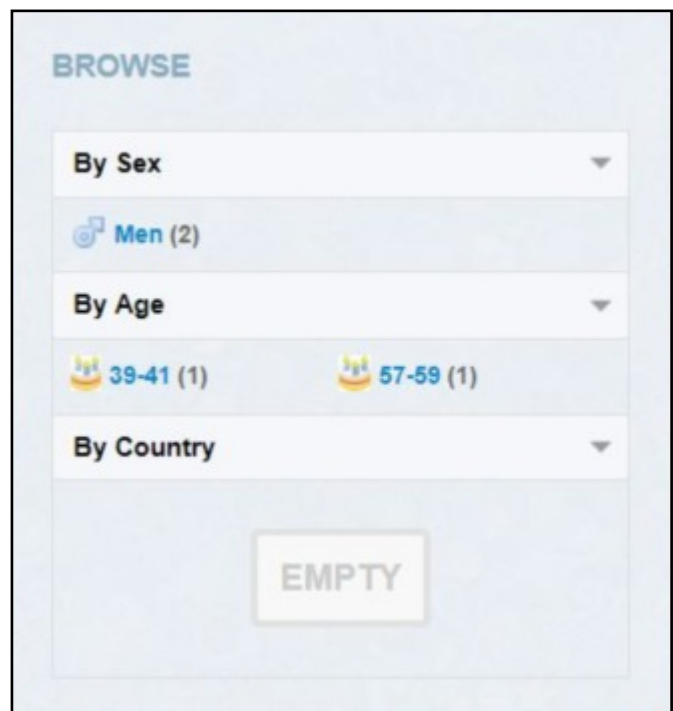


The **Browse** form on the right isn't very useful for a social networking site and it's interesting to note that several people have posted on the Dolphin Forum asking how this section can be modified or removed.

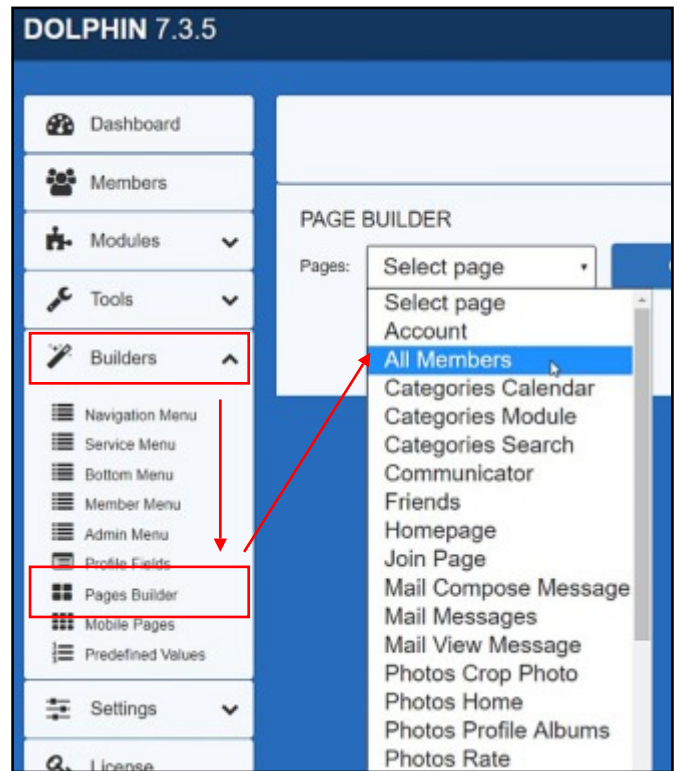
It can't easily be modified because it's integrated with the database, but there is good news. It can be removed and replaced with something else far more useful.

This tutorial explains how to do this, but please keep in mind that there are dozens of additional things you can do that we can't possibly cover here.

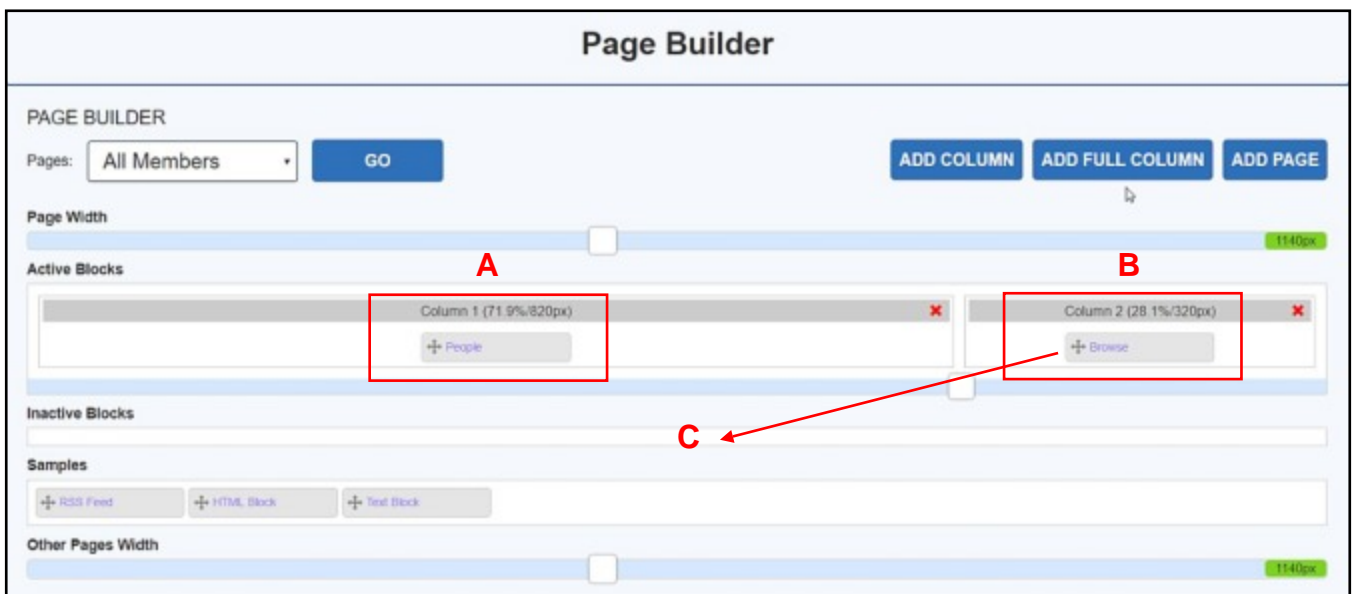
Please make sure you use a test site before committing to your main site.



1. Go to Admin/Builders/Pages Builder
2. Click All members from the Select Page drop-down.



Below: The blocks **A** and **B** represent the People and Browse areas on the people page.



Removing the Browse Block

4. Hover the mouse over the grey header of Column 2 until you see a directional pointer (See right).
5. Hold down the Left Mouse Button (LMB) and drag the Browse Block to the Inactive Blocks section. **C**

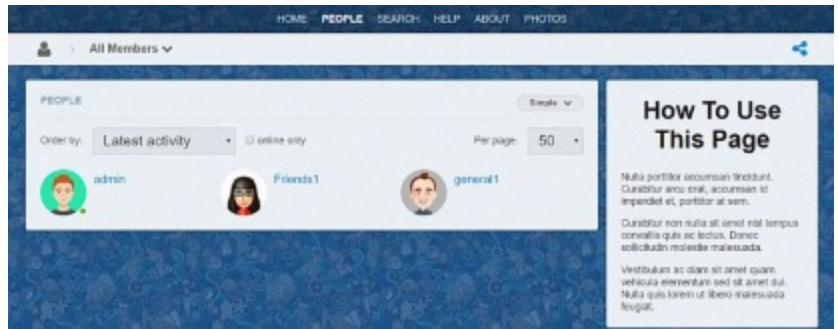


Release the mouse button.

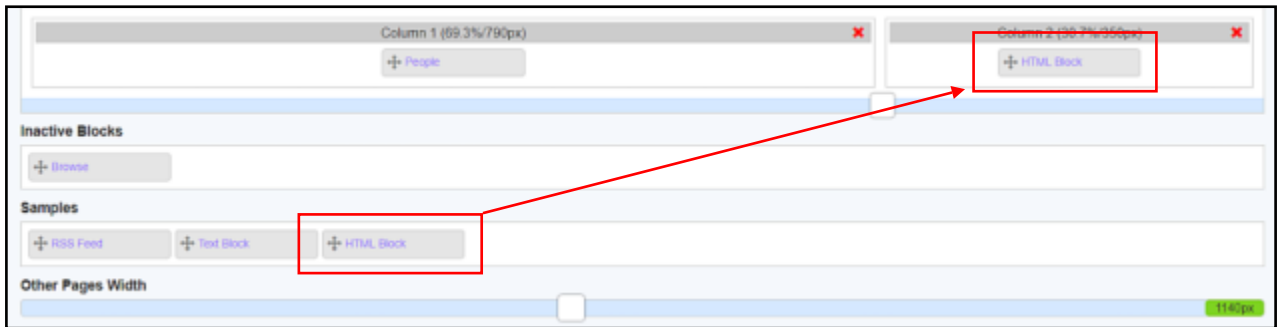
It should look like this:



If you wish, you can now use column 2 to add an HTML or Text Block. This could be an advertisement or some help text explaining how to use the People Search.



6. Drag an HTML or text Block from the Samples Area. (Below)



Allowing The People Search Block To Fill The Page

You can completely remove Column 2, but it's wise to do some preparation first.

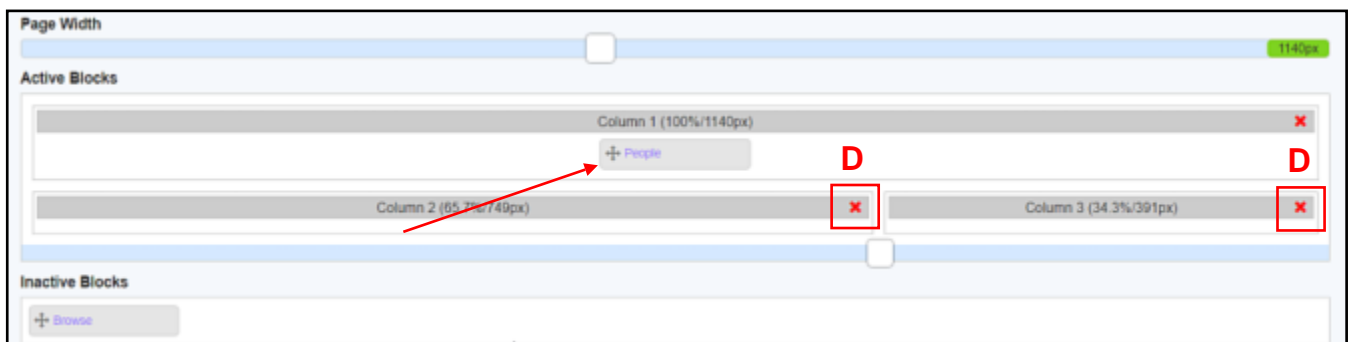
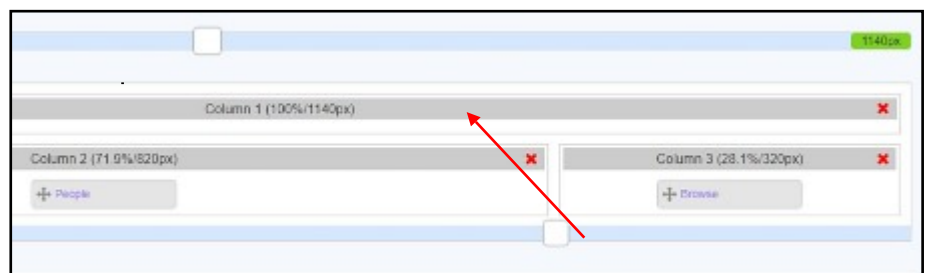
7. Click the Add **Full Column** button.

A new full width column (**Column 2**) will appear under the two existing columns.



8. Hold down the Left Mouse Button (LMB) and drag the column until it's above the two original columns.

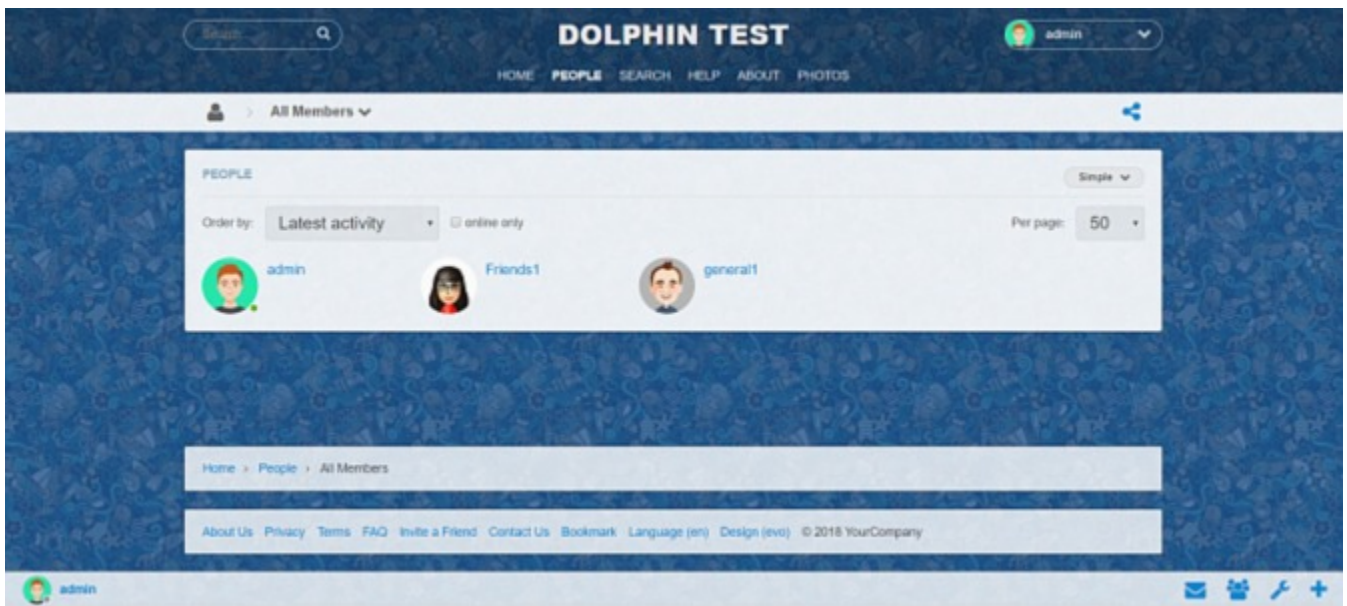
Release the mouse button.



9. Move the people Block into full **Column 1**

10. Delete columns 2 and 3. (D)

The Finished Page



Warning: As I said earlier in this tutorial, the page is next to useless.

Members can only search by:

- Latest Activity
- Registration Date
- Rating.

It may be okay if you only have 50 members and they all fit on the first page, but what if you have 500? The mind boggles.

Please look at my Tutorial **Placing a Search Block on the People Page** to solve this problem.